

TIIG  
INJURY SURVEILLANCE IN THE NORTH WEST OF ENGLAND

FURNESS GENERAL HOSPITAL EMERGENCY DEPARTMENT

MONTHLY BULLETIN: APRIL 2013 TO MARCH 2014

This bulletin provides a breakdown of all injury attendances to Furness General Hospital Emergency Department (ED) between April 2013 and March 2014.

In the twelve month period there were 7,868 injury attendances to the ED. The month with the highest number of attendances was July 2013 (n=961) compared to April 2013, the month with the fewest (n=420) (**Figure 1**).

There were more males than females attending the ED in 2013/14 (males=4,470; 57%) (**Figure 1**). Just under one-third (32%) were aged between 30 and 59 years (n=2,482), followed by 28% aged between 15 and 29 years (n=2,195) and 21% aged 60 years and above (n=1,681) (**Figure 2**).

**Table 1** shows the injury group of attendances between April 2013 and March 2014. Over seven in ten (72%) attendances were categorised as 'other' injury (n=5,690). Sports injury accounted for 13% of attendances (n=1,055) and 6% were due to road traffic collisions (n=510). Furthermore, deliberate self-harm (n=331) and assaults (n=282) each accounted for 4% of injury attendances.

The referral source to the ED is detailed in **Table 2**. The majority (91%) were self-referred (n=7,193), while 5% were referred by their General Practitioner (GP; n=410) and 3% were referred by the emergency services (n=254).

**Table 3** illustrates the incident location. Two in five (40%) incidents were recorded as occurring in 'other' location (n=3,149). Just over a quarter (26%)

occurred in a public place (n=2,023) and just under a quarter (24%) occurred in the home (n=1,857).

The discharge destination for ED attendances is displayed in **Table 4**. Over one-third (34%) were discharged from hospital with no follow-up treatment required (n=2,644) while under a quarter (23%) were discharged from hospital with follow-up treatment to be provided by a GP (n=1,781). Under one-fifth (17%) were admitted to hospital (n=1,354) and 11% were referred to the fracture clinic (n=888).

#### ASSAULT ATTENDANCES

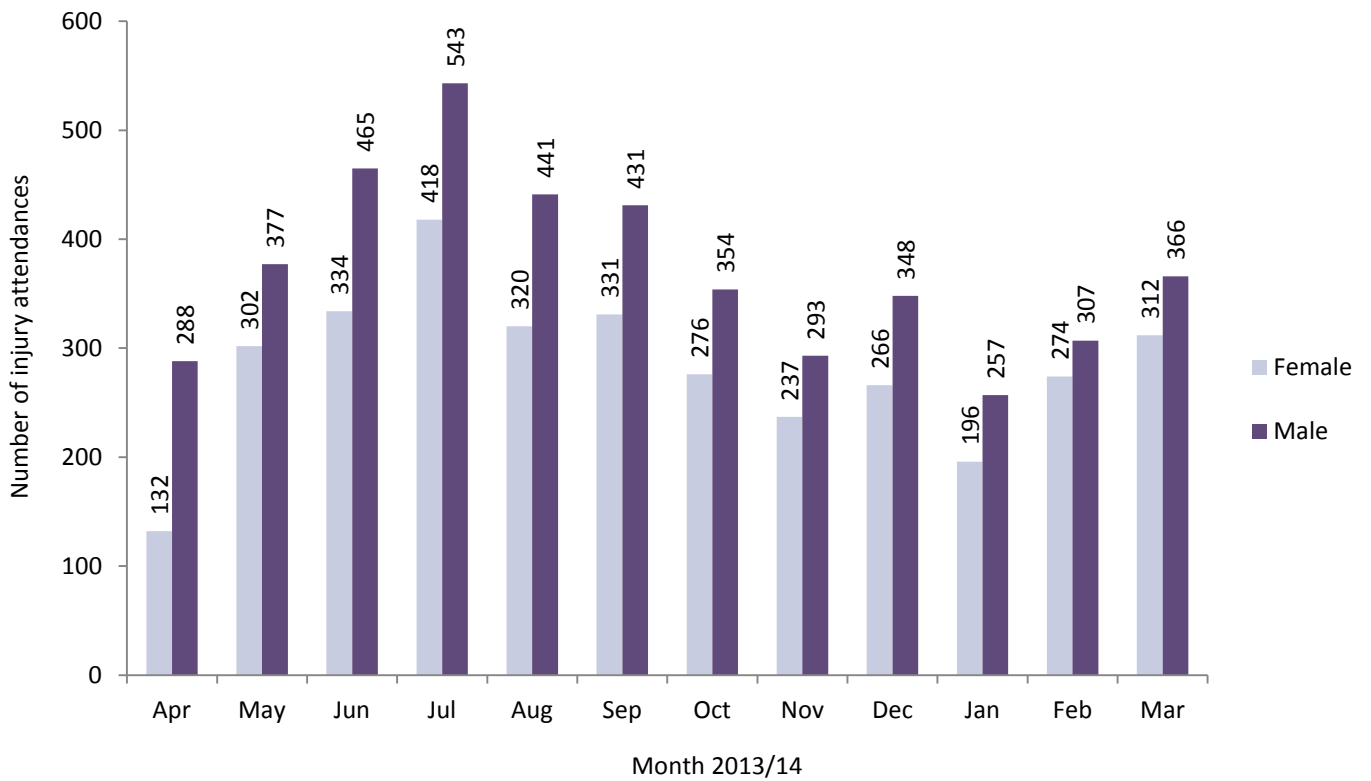
Between April 2013 and March 2014 there were 282 assault attendances to Furness General Hospital ED. The month with the highest number was August 2013 with 29 assault attendances (**Figure 3**).

Under three-quarters (73%) of attendees presenting to the ED with assault-related injuries were male (n=205) (**Figure 3**). Just over half (51%) were aged between 15 and 29 years (n=145) while over two in five (42%) were aged between 30 and 59 years (n=119) (**Table 5**).

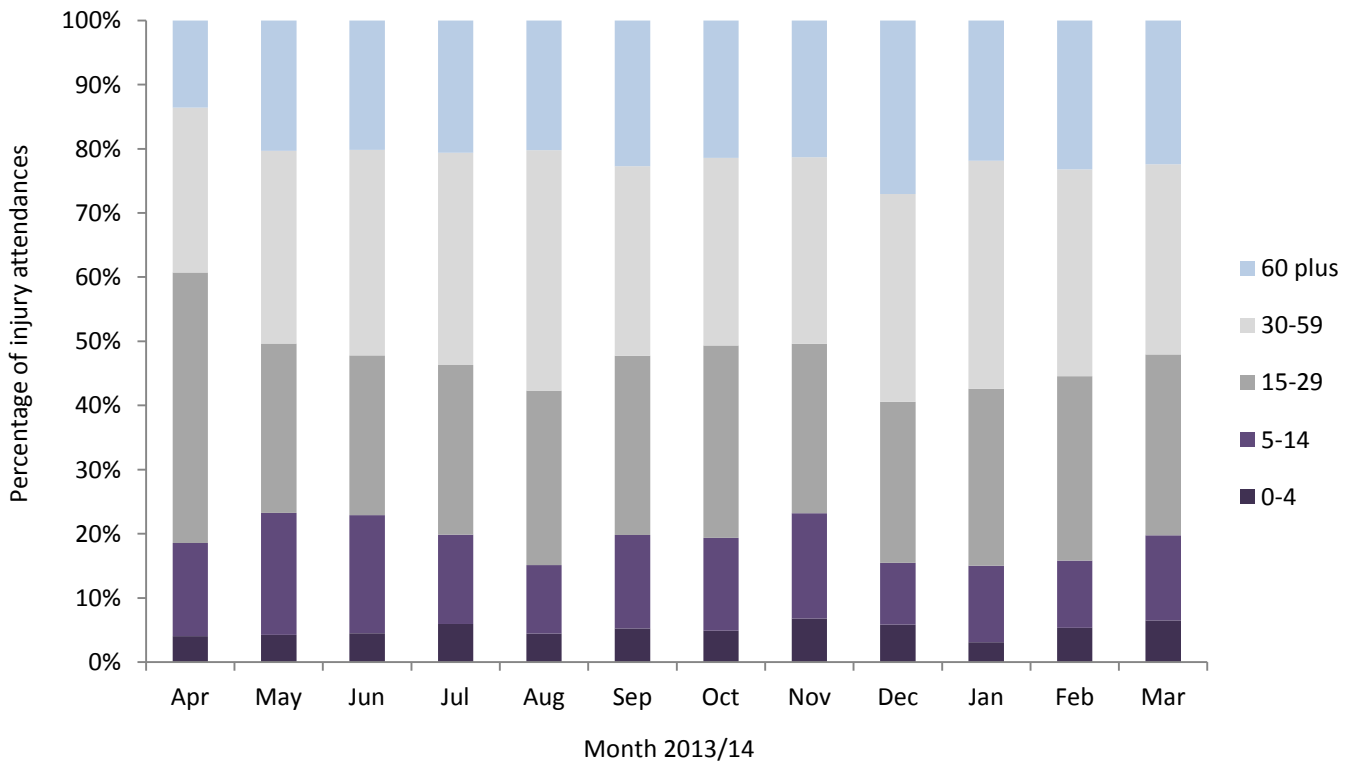
The assault location is shown in **Table 6**. Over half (55%) of incidents occurred in a public place (n=155) and one in five (20%) occurred in the home (n=55).

**Table 7** illustrates the disposal method of assault attendances. Forty-four per cent required follow-up treatment (n=125) and 41% were discharged from hospital with no follow-up treatment required (n=116). Six per cent were admitted to hospital (n=16).

**Figure 1: ED attendances by gender and month, April 2013 to March 2014**



**Figure 2: ED attendances by age group and month, April 2013 to March 2014**



**Table 1: ED attendances by injury group and month, April 2013 to March 2014<sup>^</sup>**

Injury group	Apr	May	Jun	Jul	Aug	Sep	Oct	Nov	Dec	Jan	Feb	Mar	Total	%
Other injury	212	480	580	741	593	541	441	374	454	300	461	513	5690	72%
Sports injury	113	107	113	135	61	104	96	76	59	56	48	87	1055	13%
Road traffic collision	42	39	42	35	49	62	44	28	53	45	34	37	510	6%
Deliberate self-harm	35	27	42	25	29	28	28	24	23	30	18	22	331	4%
Assault	18	26	22	25	29	27	21	28	25	22	20	19	282	4%
<b>Total</b>	<b>420</b>	<b>679</b>	<b>799</b>	<b>961</b>	<b>761</b>	<b>762</b>	<b>630</b>	<b>530</b>	<b>614</b>	<b>453</b>	<b>581</b>	<b>678</b>	<b>7868</b>	<b>100%</b>

<sup>^</sup> Due to low numbers, firework injuries have been included in the 'other' injury category (n=7).

**Table 2: ED attendances by referral source and month, April 2013 to March 2014<sup>1</sup>**

Referral source	Apr	May	Jun	Jul	Aug	Sep	Oct	Nov	Dec	Jan	Feb	Mar	Total	%
Self-referral	397	628	754	911	696	708	571	488	543	404	488	605	7193	91%
General medical practitioner	***	33	<25	28	39	30	36	25	50	25	68	53	410	5%
Emergency services	20	16	24	20	25	24	22	16	20	23	25	19	254	3%
Police	***	***	0	***	***	0	***	***	0	***	0	0	5	0%
Educational establishment	0	***	0	0	0	0	***	***	***	***	0	***	***	0%
Other	0	0	***	***	***	0	0	0	***	0	0	***	***	0%
<b>Total</b>	<b>420</b>	<b>679</b>	<b>799</b>	<b>961</b>	<b>761</b>	<b>762</b>	<b>630</b>	<b>530</b>	<b>614</b>	<b>453</b>	<b>581</b>	<b>678</b>	<b>7868</b>	<b>100%</b>

**Table 3: ED attendances by incident location and month, April 2013 to March 2014**

Incident location	Apr	May	Jun	Jul	Aug	Sep	Oct	Nov	Dec	Jan	Feb	Mar	Total	%
Other	56	236	328	364	337	258	269	176	305	181	296	343	3149	40%
Public place	193	186	178	287	207	219	150	156	121	103	101	122	2023	26%
Home	133	169	201	222	173	196	125	123	138	125	110	142	1857	24%
Work	22	42	39	48	44	40	42	38	31	19	46	29	440	6%
Educational establishment	16	46	53	40	0	49	44	37	19	25	28	42	399	5%
<b>Total</b>	<b>420</b>	<b>679</b>	<b>799</b>	<b>961</b>	<b>761</b>	<b>762</b>	<b>630</b>	<b>530</b>	<b>614</b>	<b>453</b>	<b>581</b>	<b>678</b>	<b>7868</b>	<b>100%</b>

**Table 4: ED attendances by discharge destination and month, April 2013 to March 2014<sup>1,2</sup>**

Discharge destination	Apr	May	Jun	Jul	Aug	Sep	Oct	Nov	Dec	Jan	Feb	Mar	Total	%
Discharged - no follow-up	177	241	263	285	254	291	219	207	184	162	161	200	2644	34%
Discharged - follow-up care by GP	75	146	169	247	162	150	134	113	154	98	151	182	1781	23%
Admitted	40	101	138	144	149	126	103	75	130	95	120	133	1354	17%
Fracture clinic	78	77	93	112	82	91	70	59	60	46	60	60	888	11%
Follow-up within ED	23	41	54	70	40	51	46	33	27	11	19	41	456	6%
Out-patient clinic	10	27	25	33	25	25	24	19	23	22	27	19	279	4%
Left before being treated	11	22	23	31	25	12	9	6	11	8	19	17	194	2%
Transferred to other HCP	***	13	17	17	17	10	16	10	18	***	10	14	147	2%
Other health care professional	***	8	12	11	***	***	***	***	***	***	5	6	59	1%
Left having refused treatment	***	***	***	5	***	***	***	***	0	***	7	***	32	0%
Other	***	0	***	<10	***	***	***	***	***	5	***	***	25	0%
Died in department	0	***	***	***	0	0	0	0	***	***	***	***	9	0%
<b>Total</b>	<b>420</b>	<b>679</b>	<b>799</b>	<b>961</b>	<b>761</b>	<b>762</b>	<b>630</b>	<b>530</b>	<b>614</b>	<b>453</b>	<b>581</b>	<b>678</b>	<b>7868</b>	<b>100%</b>

<sup>1</sup> Please note that all numbers less than five have been suppressed (with \*\*\*) in line with patient confidentiality. If there is only one number less than five in a category then two numbers have been suppressed to prevent back calculations from totals.

<sup>2</sup> HCP = Health care provider

## ASSAULTS

Figure 3: ED assault attendances by gender and month, April 2013 to March 2014<sup>3</sup>

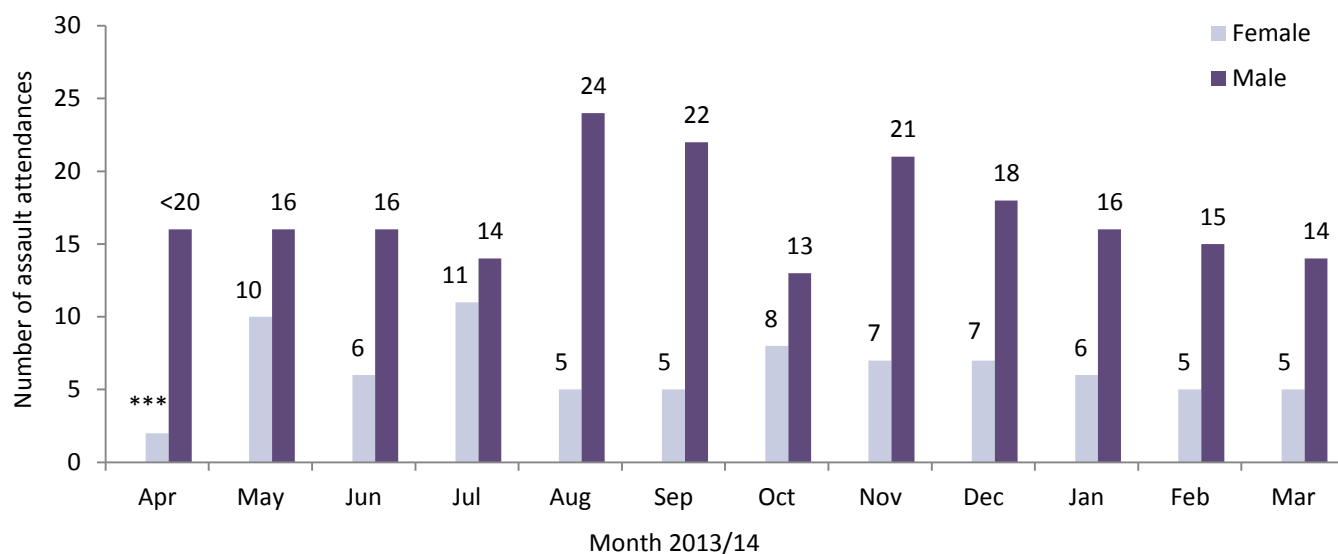


Table 5: ED assault attendances by age group and month, April 2013 to March 2014<sup>5,3</sup>

Age group	Apr	May	Jun	Jul	Aug	Sep	Oct	Nov	Dec	Jan	Feb	Mar	Total	%
5-14	***	***	0	***	0	***	***	***	***	***	0	***	11	4%
15-29	8	13	10	9	13	14	14	15	14	9	16	10	145	51%
30-59	6	12	12	14	16	12	5	12	7	12	***	<10	119	42%
60 plus	***	***	0	***	0	***	***	***	***	***	***	0	7	2%
<b>Total</b>	<b>18</b>	<b>26</b>	<b>22</b>	<b>25</b>	<b>29</b>	<b>27</b>	<b>21</b>	<b>28</b>	<b>25</b>	<b>22</b>	<b>20</b>	<b>19</b>	<b>282</b>	<b>100%</b>

<sup>5</sup> There were no assault attendances in the 0-4 years category.

Table 6: ED assault attendances by incident location and month, April 2013 to March 2014<sup>3</sup>

Incident location	Apr	May	Jun	Jul	Aug	Sep	Oct	Nov	Dec	Jan	Feb	Mar	Total	%
Public place	8	13	11	12	19	14	11	21	13	10	13	10	155	55%
Home	***	6	***	***	***	7	***	***	***	7	<10	5	55	20%
Other	***	***	6	7	5	***	5	***	6	***	***	***	45	16%
Work	***	***	***	***	***	***	0	***	***	***	0	***	18	6%
Educational establishment	***	***	0	0	0	***	***	0	0	***	0	***	9	3%
<b>Total</b>	<b>18</b>	<b>26</b>	<b>22</b>	<b>25</b>	<b>29</b>	<b>27</b>	<b>21</b>	<b>28</b>	<b>25</b>	<b>22</b>	<b>20</b>	<b>19</b>	<b>282</b>	<b>100%</b>

Table 7: ED assault attendances by disposal method and month, April 2013 to March 2014<sup>3</sup>

Disposal	Apr	May	Jun	Jul	Aug	Sep	Oct	Nov	Dec	Jan	Feb	Mar	Total	%
Follow-up	10	9	5	12	10	13	10	13	13	9	9	12	125	44%
Discharged	<10	11	13	7	14	11	9	13	8	11	9	***	116	41%
Other	***	***	0	***	***	0	***	***	***	***	***	***	18	6%
Admitted	***	***	***	***	***	***	***	***	***	***	0	***	16	6%
Unknown	0	***	***	***	0	***	0	0	0	0	0	0	7	2%
<b>Total</b>	<b>18</b>	<b>26</b>	<b>22</b>	<b>25</b>	<b>29</b>	<b>27</b>	<b>21</b>	<b>28</b>	<b>25</b>	<b>22</b>	<b>20</b>	<b>19</b>	<b>282</b>	<b>100%</b>

Published May 2014

Karen A Critchley (née Swarbrick) – TIIG Researcher/Analyst

Centre for Public Health, Faculty of Education, Health and Community, Liverpool John Moores University,

2nd Floor, Henry Cotton Building, Liverpool L3 2ET

T: 0151 231 4498 | E: [k.a.critchley@ljmu.ac.uk](mailto:k.a.critchley@ljmu.ac.uk) | W: [www.tiig.info](http://www.tiig.info) and [www.cph.org.uk](http://www.cph.org.uk) | Twitter: [www.twitter.com/tiig\\_cph](https://twitter.com/tiig_cph)

<sup>3</sup> Please note that all numbers less than five have been suppressed (with \*\*\*) in line with patient confidentiality. If there is only one number less than five in a category then two numbers have been suppressed to prevent back calculations from totals.